

Request for Quotation / 報價請求

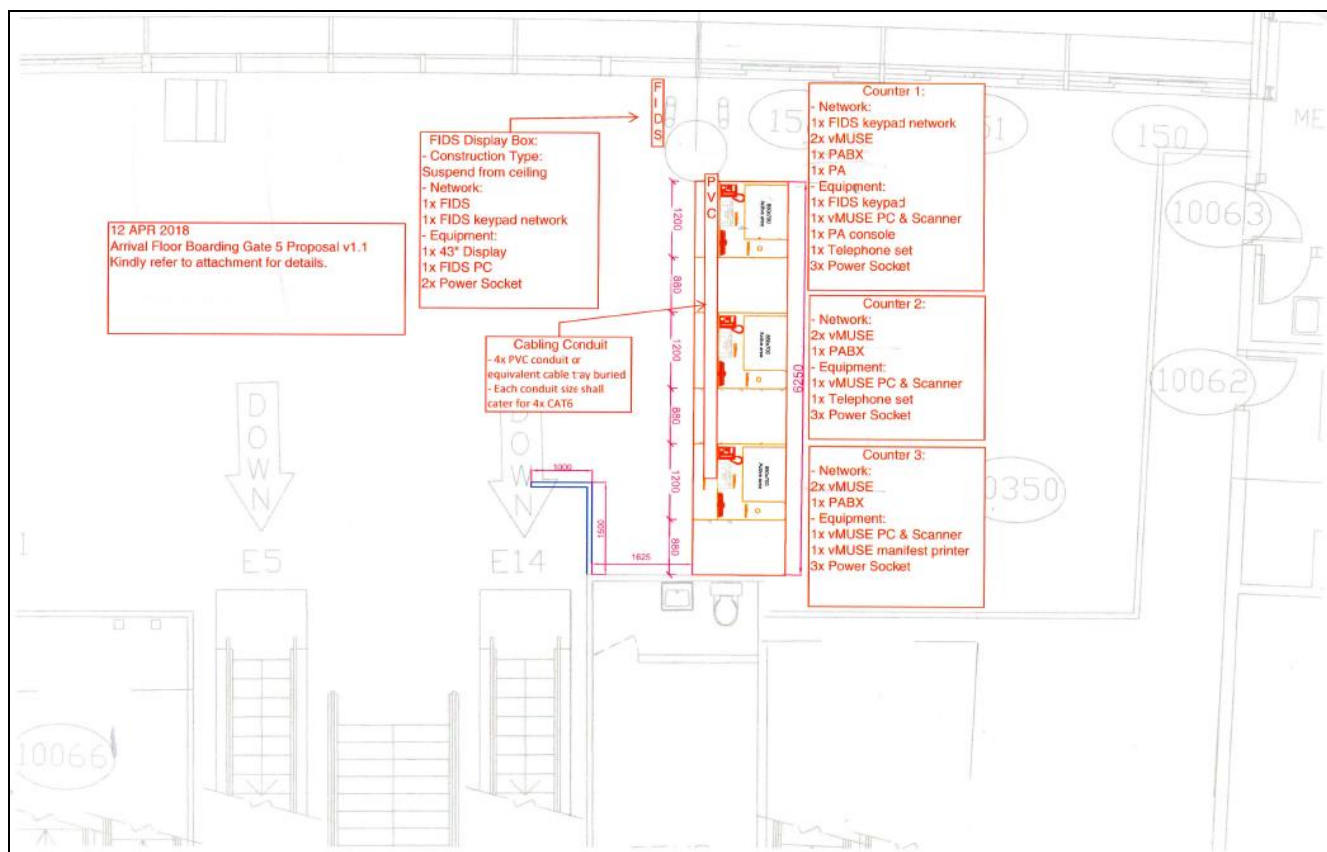
Subject:	Cabling Work for Boarding Gate No1, 2 and 2A Relocation		
From/由:	Mr. Kim Wong / Patrick So	E-mail/電郵	kimwong@aims.com.mo
Tel/電話:	853-8598 8717 / 8898 2369	Fax/傳真:	853-8598 8711
Date/日期:	07-May-2018	Ref:	023-2018-Q

煩請按下列要求報價：

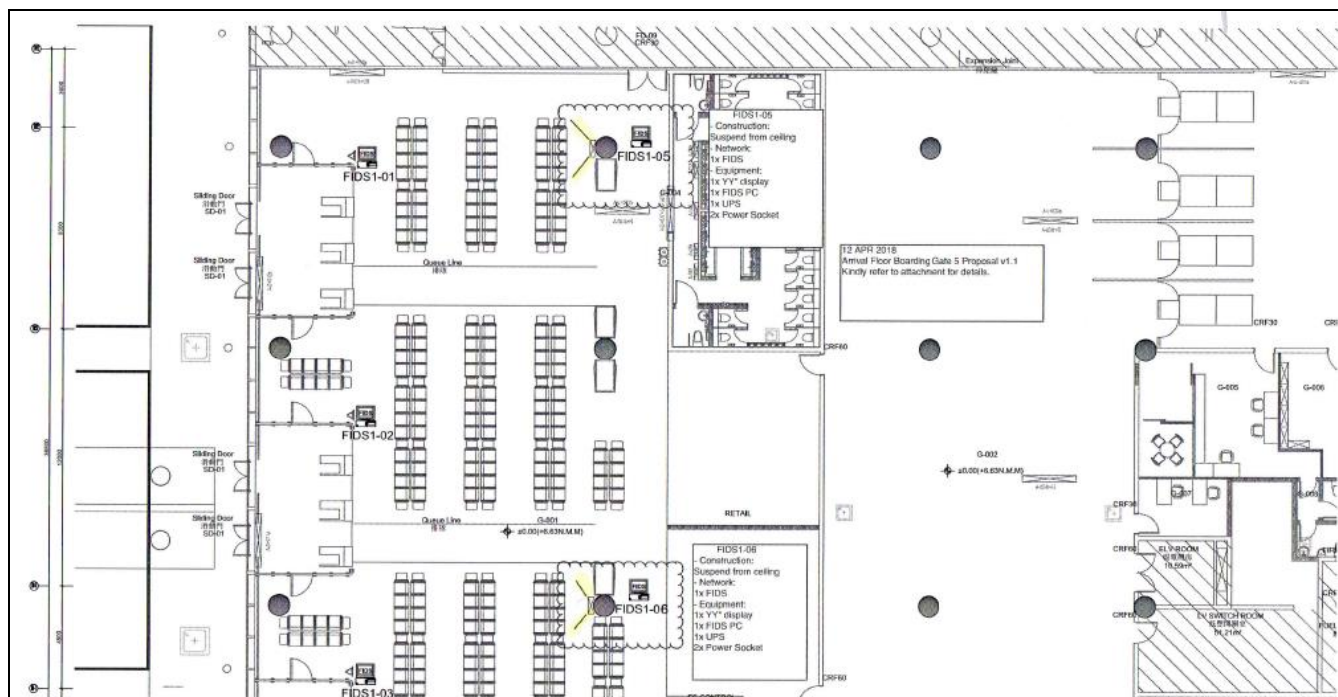
No.	Item / Model / Description	Qty.
1.	2 x CAT6 LAN cables with dual port faceplate from Counter No.1 to the nearest vMUSE switch	1
2.	2 x CAT6 LAN cables with dual port faceplate from Counter No.2 to the nearest vMUSE switch	1
3.	2 x CAT6 LAN cables with dual port faceplate from Counter No.3 to the nearest vMUSE switch	1
4.	Telephone cable with faceplate from Counter No.1 to the nearest MDF	1
5.	Telephone cable with faceplate from Counter No. 2 to the nearest MDF	1
6.	Telephone cable with faceplate from Counter No. 3 to the nearest MDF	1
7.	Relocate one PABX MDF box from Boarding Gate No1. to Counter No.1	1
8.	1 x CAT6 LAN cable for PA Console from Counter No.1 to Computer Room	1
9.	1 x CAT6 LAN cable from FIDS Display Box (beside the counter) to Counter No.1	1
10.	3 x CAT6 LANs cable from FIDS Display Boxes to the nearest FIDS switch	1
11.	ASUS Vivo PC UN45H-V-M024Z	3
12.	APC 650VA UPS	3
13.	Supply and Install Pelco IME229-1IS IP Camera	4
14.	1 x CAT6 LAN cable from the IP Camera to USS1 CCTV Network Switch	4

ID	System	Location	Network	Existing Equipment	New Equipment	Responsibility	Remarks
1.1	vMUSE	Counter 1	2x vMUSE network port In dual port faceplate	1x vMUSE PC, UPS and accessories 1x Boarding Gate Reader		MSC(s)	Utilise existing equipment at old Gate 2, 1A, 1
1.1	vMUSE	Counter 2	2x vMUSE network port In dual port faceplate	1x vMUSE PC, UPS and accessories 1x Boarding Gate Reader		MSC(s)	Utilise existing equipment at old Gate 2, 1A, 1
1.3	vMUSE	Counter 3	2x vMUSE network port In dual port faceplate	1x vMUSE PC, UPS and accessories 1x Boarding Gate Reader 1x vMUSE manifest printer		MSC(s)	Utilise existing equipment at old Gate 2, 1A, 1
2.2	FIDS	FIDS display box near new Boarding Gate 5	1x FIDS keypad LAN to Counter 1 1x FIDS network In single port faceplate		1x FIDS PC 1x UPS	MSC(s)	PC spec reference existing FIDS display- use PC model
2.3	FIDS	Counter 1	1x FIDS keypad LAN to FIDS display box		1x FIDS keypad 1x pair of USB-LAN convertor	MSC(s)	
2.5	FIDS	FIDS display box near N-PTB boarding area (FIDS1-05)	1x FIDS network In single port faceplate		1x FIDS PC 1x UPS	MSC(s)	
2.7	FIDS	FIDS display box near N-PTB boarding area (FIDS1-06)	1x FIDS network In single port faceplate		1x FIDS PC 1x UPS	MSC(s)	
3.1	PABX	For each counter	1x Single PABX network port			MSC(s)	
3.2	PABX	Counter 1		1x Telephone set		MSC(s)	Relocate existing Gate 1, 2 extension number (1162)
3.3	P/ BX	Counter 2		1x Telephone set		MSC(s)	Relocate existing Gate 1, 2 extension number (1167)
3.4	PABX	Old Boarding Gate 1	-	1 x PABX box		MSC(s)	To relocate
4.1	PA	Counter 1	1x Single PA network port	1x PA console		MSC(s)	Utilise existing PA console at old Gate 1
5.1	CCTV	-	4x CAT 6 Source from #USS1		4x IME229-1IS	MSC(s)	
9.2	Cabling	ELV closet	All LAN cables should be patched at available patch panels. Quote additional patch panels if needed.			MSC(s)	

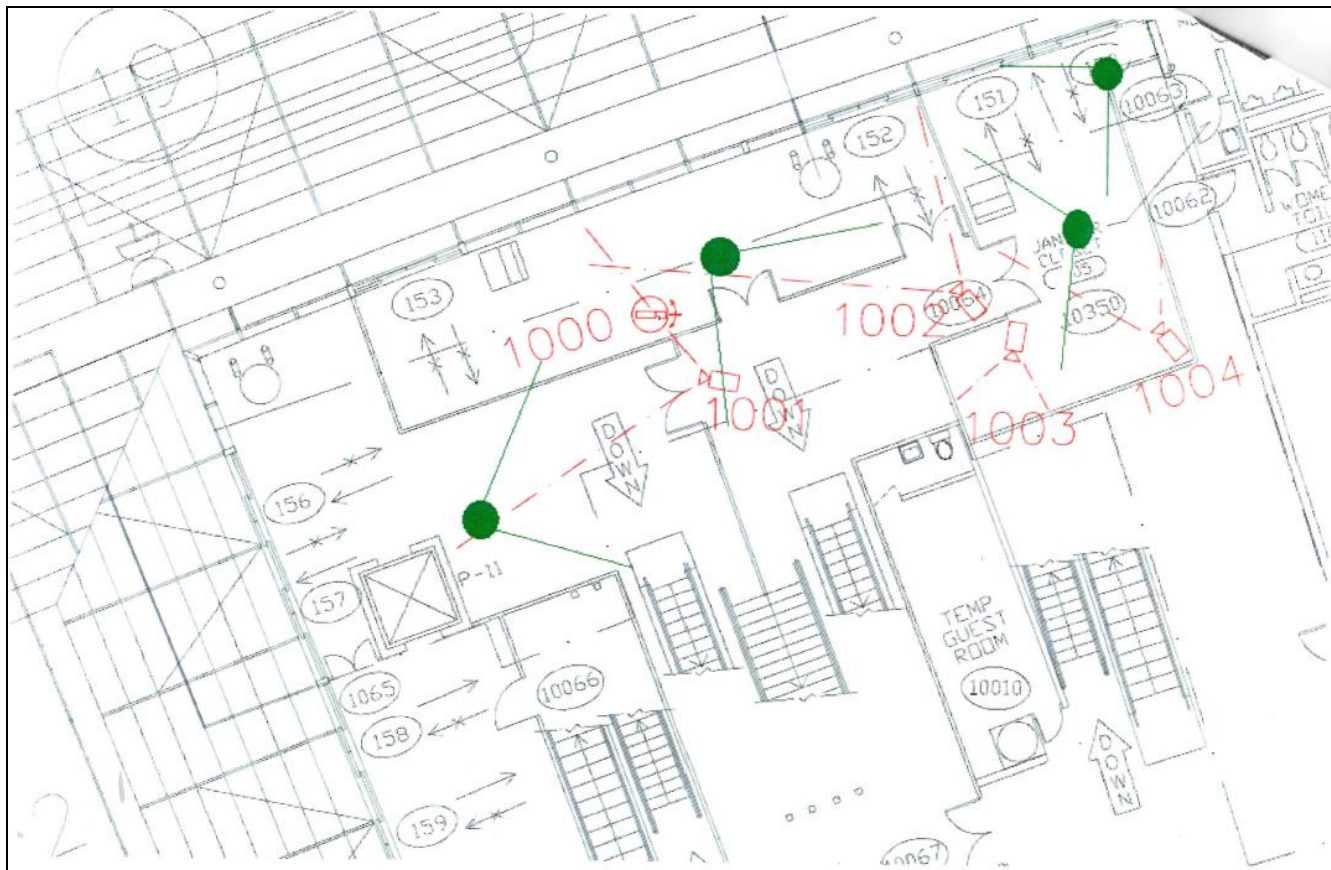
New Counter No.1, 2 and 3



Two additional FIDS Display



Four Additional IP CCTV Cameras



條款:

1. 報價時請列明所有條款
2. 報價請以澳門幣結算及付款方式
3. 註明完成項目週期